

1. Finish Goods PKG photo



2. Packing method



Fig.1- Reel pack for Axial Lead

Table 1. Packing information

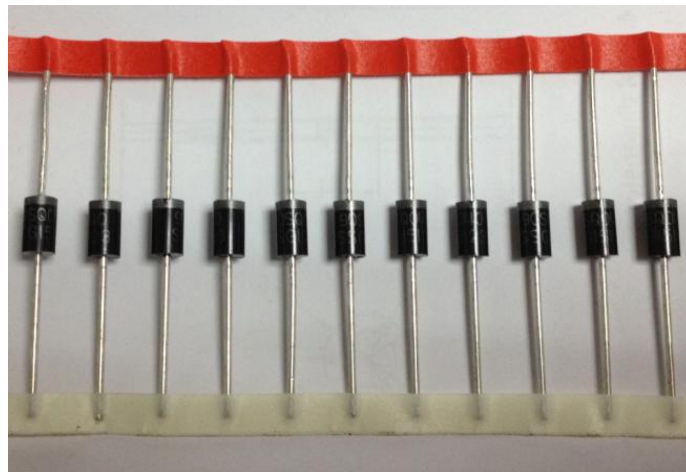
Package version	Inner box (pcs)	Tabes per box	Inner box dimensions L×W×H (mm)	Inner box weight (Kg)	Outer box (pcs)	Inner box dimensions L×W×H (mm)	Outer box weight (Kg)
DO-15	3000	1	255*80*148	1.3	30000	430*370*320	15

Table 2. Packing information

Package version	Inner box (pcs)	Tabes per box	Inner box dimensions L×W×H (mm)	Inner box weight (Kg)	Outer box (pcs)	Inner box dimensions L×W×H (mm)	Outer box weight (Kg)
DO-15	2000	1	250*85*116	0.95	20000	425*270*265	10.1

3. Product orientation

Standard product orientation DO-15



→
direction of feed

Fig 2. Product orientation in carrier tape

4. Carrier tape dimensions

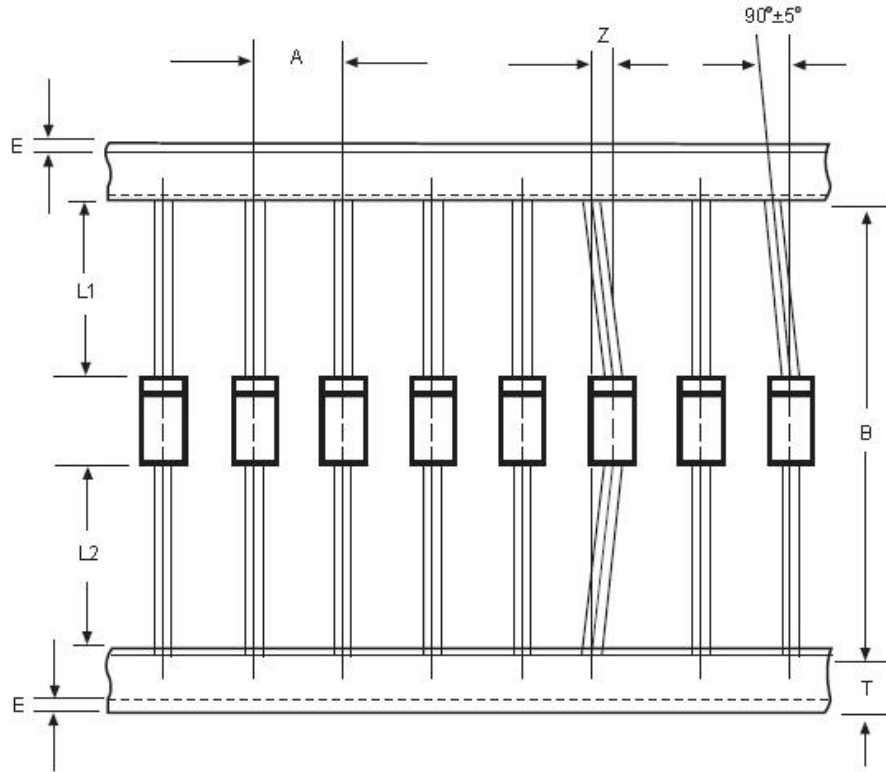


Table 2. Carrier tape dimensions

COMPONENT OUTLINE	COMPONENT PITCH A	INNER TAPE PITCH B		CUMULATIVE PITCH TOLERANCE
	$\pm 0.5\text{mm}$ (.020")	$\pm 0.5\text{mm}$ (.020")	$\pm 1.5\text{mm}$ (0.059")	
DO-15	5.0mm		52.4mm	2.0mm/10pitch

ITEM	SYMBOL	SPECIFICATIONS(mm)	SPECIFICATION(inch)
Component alignment	Z	1.2max.	0.048max.
Tape width	T	6.0 ± 0.4	0.236 ± 0.016
Exposed adhesive	E	0.8max.	0.032max.
Body eccentricity	IL1-L2I	1.0max.	0.040max.